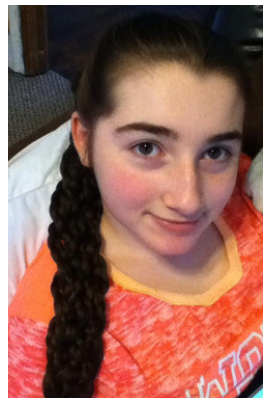


# Angelman Syndrome Natural History Study




## NOW RECRUITING NATIONWIDE

Help better our understanding of how development, behavior  
and communication changes in individuals with Angelman  
syndrome over time



For more information:

 (617)-919-6008

 [ASNaturalHistoryStudy@childrens.harvard.edu](mailto:ASNaturalHistoryStudy@childrens.harvard.edu)

 [Facebook.com/ASNaturalHistoryStudy](https://www.facebook.com/ASNaturalHistoryStudy)